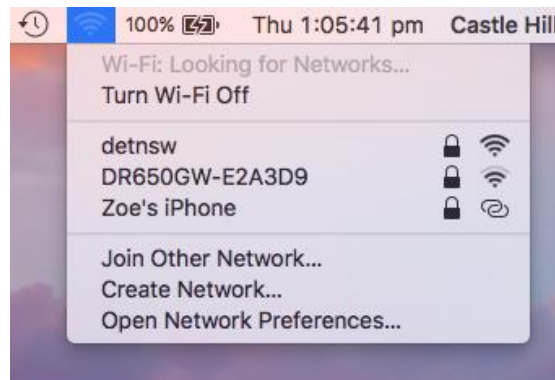
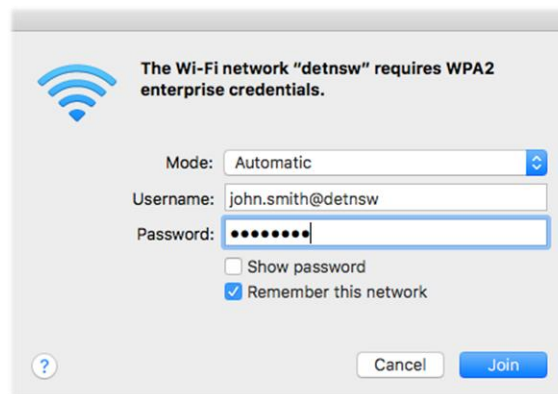


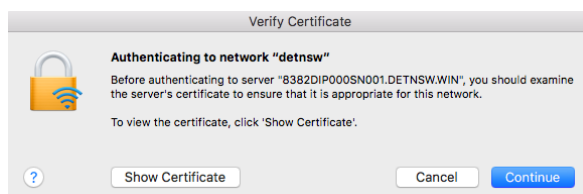
1. Select the “detnsw” Wi-Fi to connect



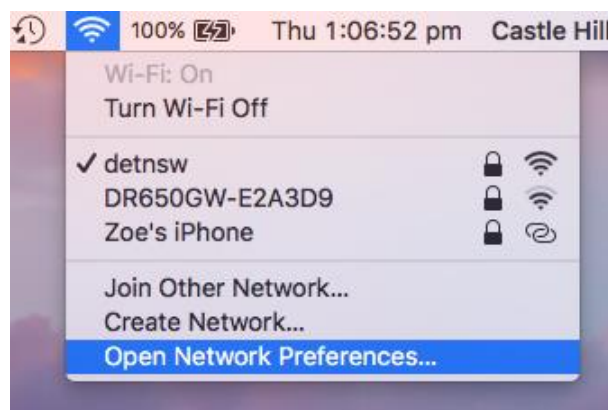
2. When prompted, enter your Student portal details, with **@DETNSW** at the end of your username and click **Join**



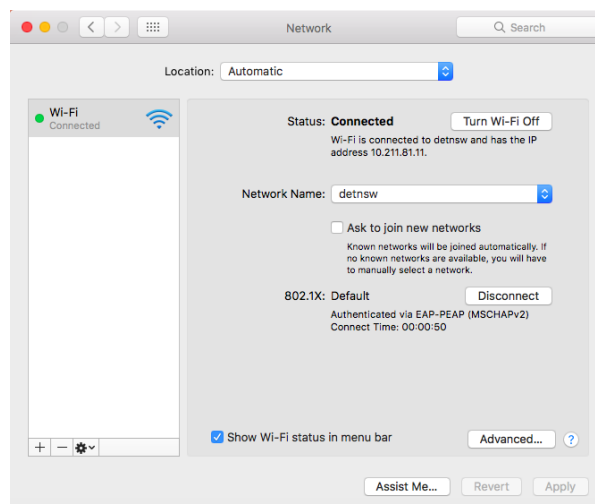
3. Click **Continue** on the “Verify Certificate” message and enter your Mac Password to continue



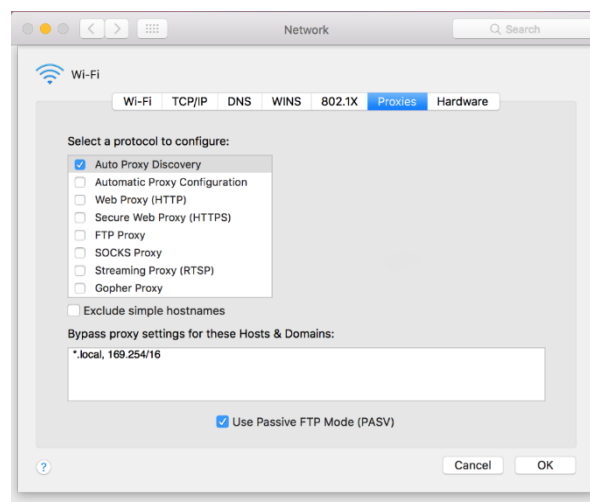
4. Click **Open Network Preferences**



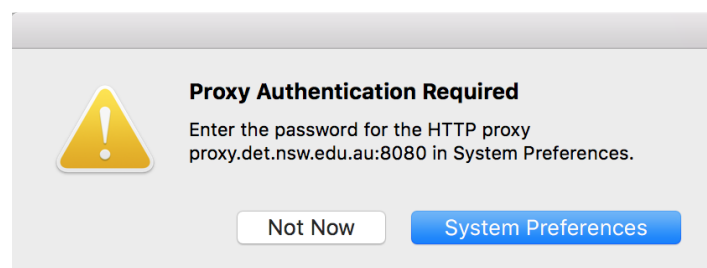
5. At the bottom of the Network Preferences, click **Advanced...**



6. Click on **Proxies** and tick **Auto Proxy Discovery**



7. Then Click **OK** and go to safari and search for something. You'll be prompted that Proxy Authentication is required. Open **system preferences**.



8. Simply enter the same username and password as Step 2. You should now be able to browse the web.

