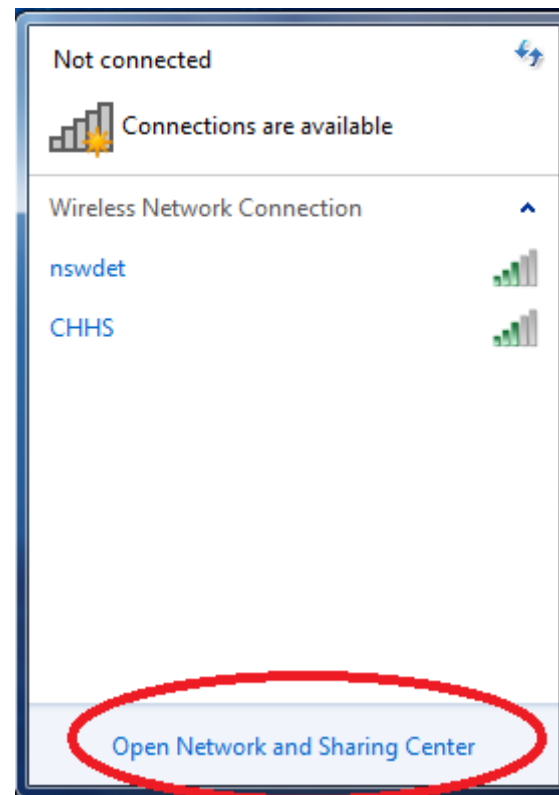


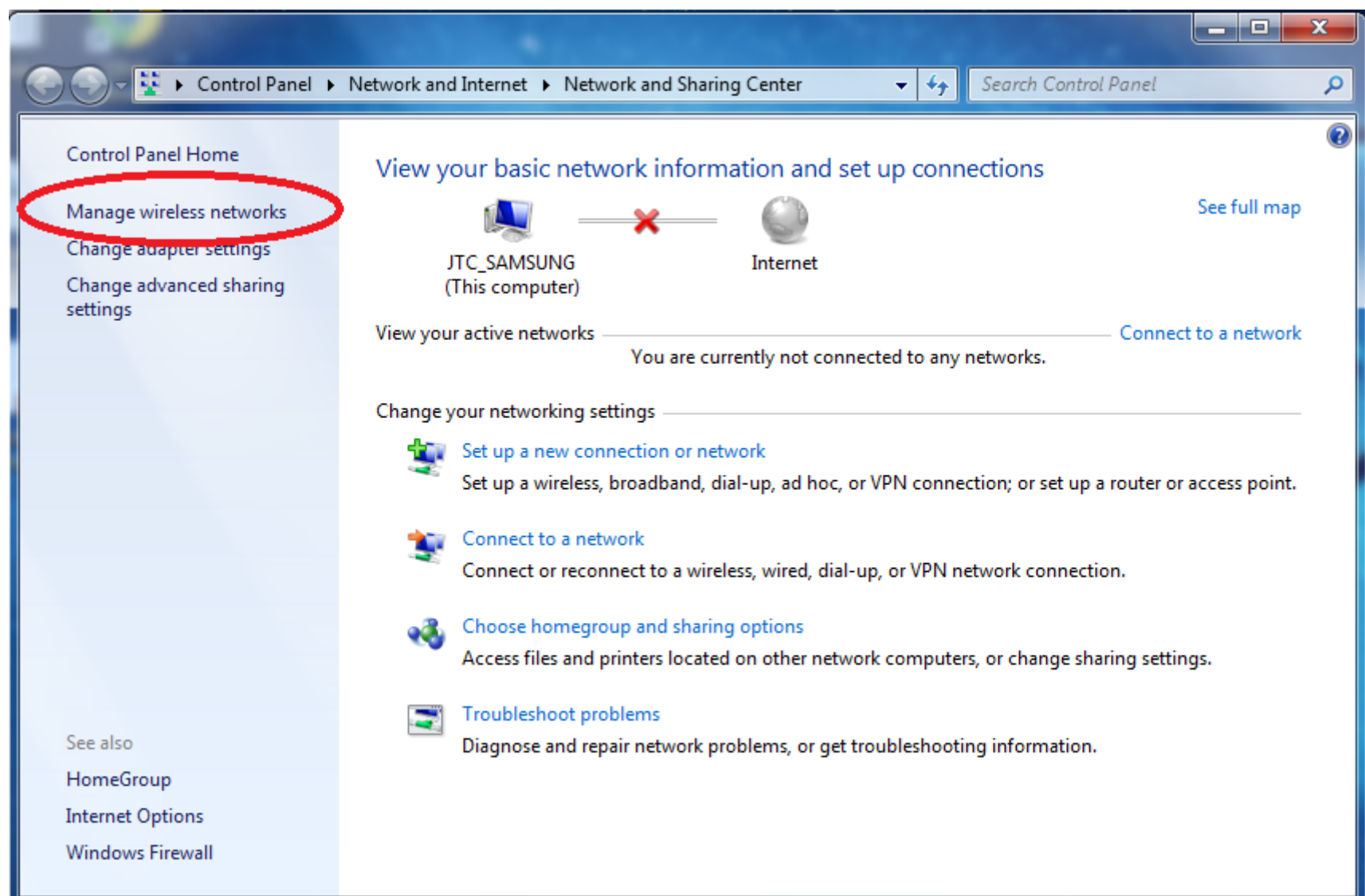
Connecting to WiFi at Castle Hill HS Windows 7

1. From the WiFi list, click on **Open Network and Sharing Center**

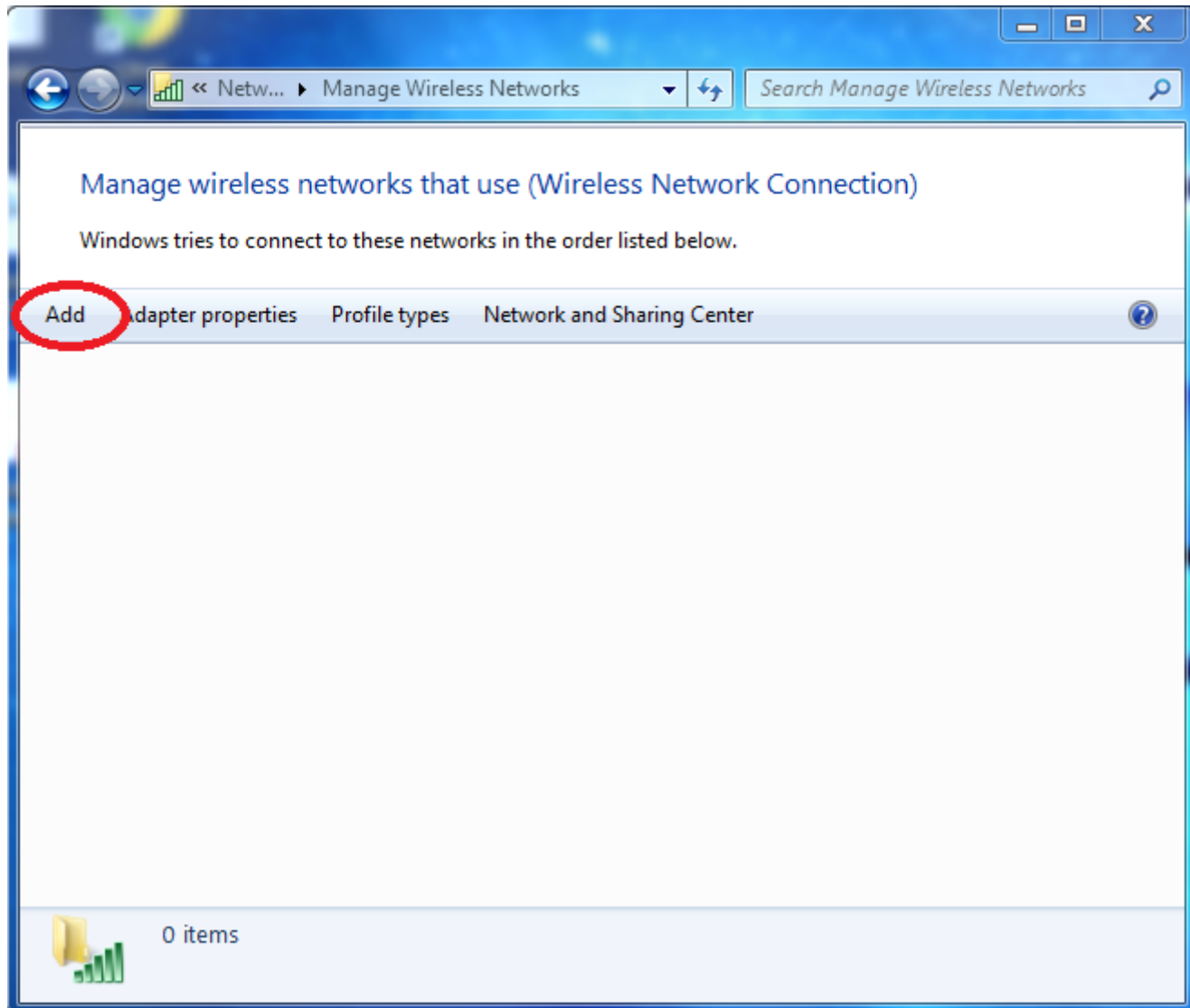
IF YOU CANNOT SEE THE NSWDET WIFI, YOUR DEVICE IS NOT CURRENTLY COMPATIBLE WITH 5GHZ WIRELESS AND A USB WIFI DONGLE IS REQUIRED



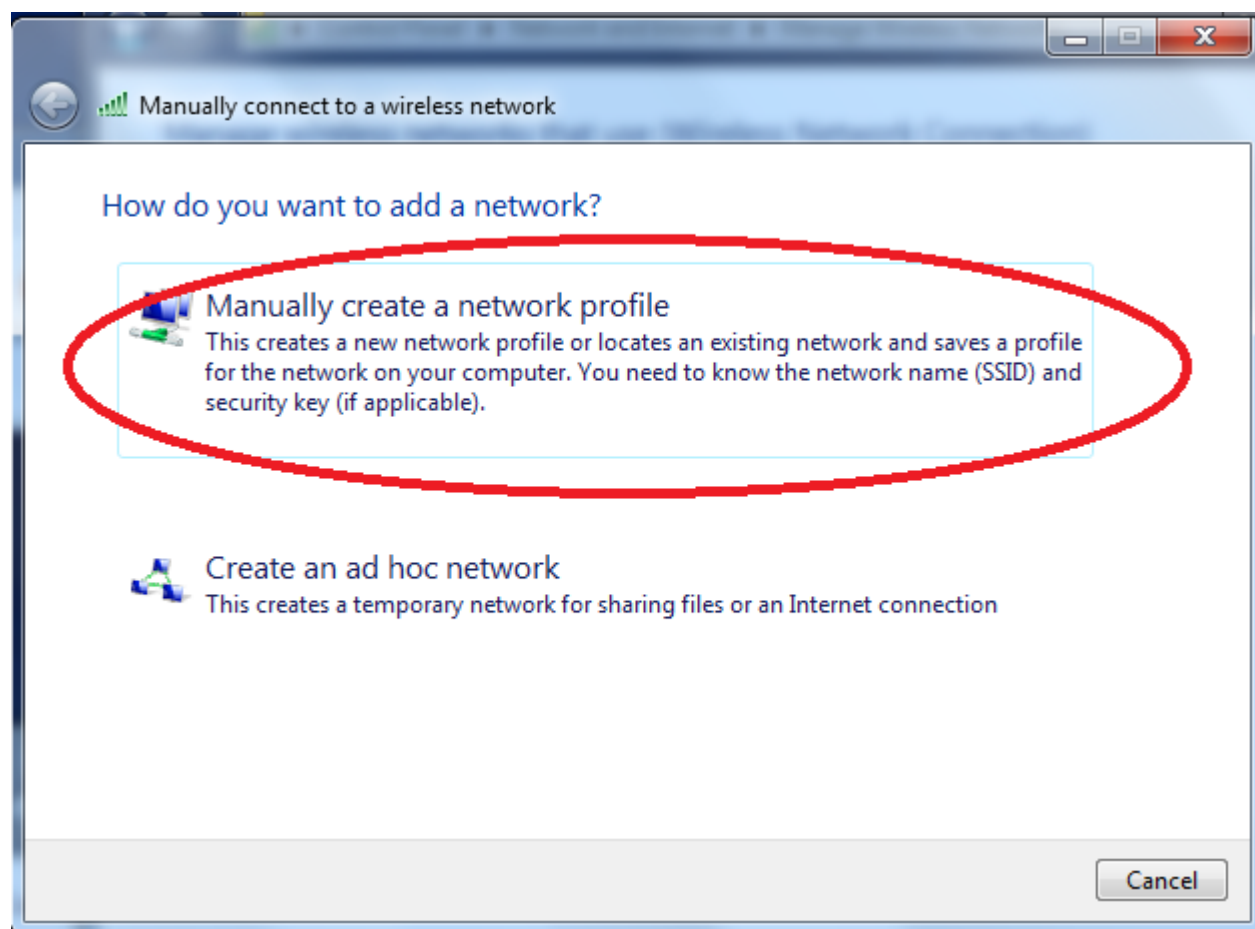
2. Click on **Manage wireless networks**



3. Click on **Add**



4. Click **Manually create a network profile**



5. Enter details as below and click **Next**

Manually connect to a wireless network

Enter information for the wireless network you want to add

Network name:

Security type:

Encryption type:

Security Key: Hide characters

Start this connection automatically

Connect even if the network is not broadcasting

Warning: If you select this option, your computer's privacy might be at risk.

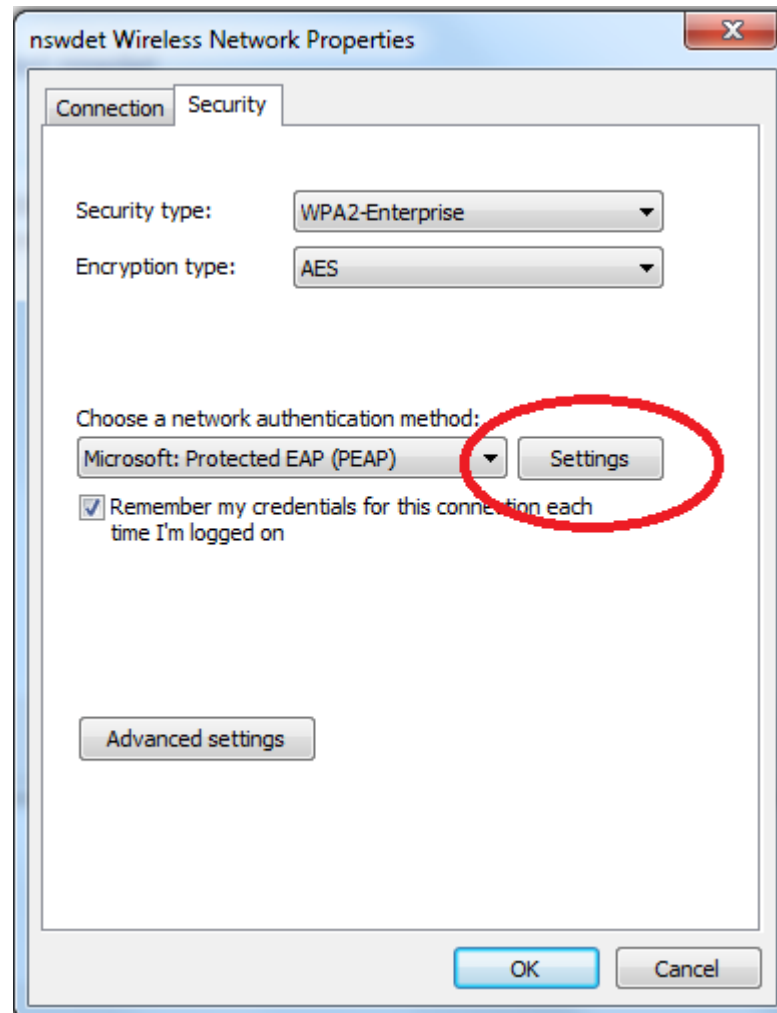
6. Click on **Change connection settings**

Manually connect to a wireless network

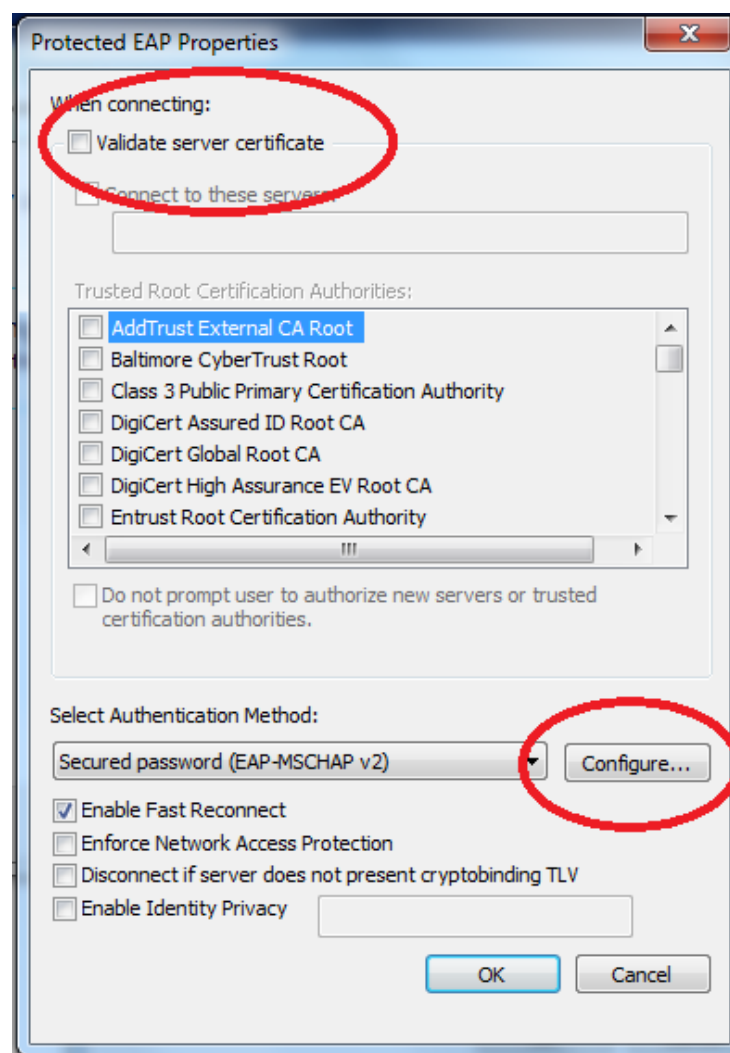
Successfully added nswdet

[→ Change connection settings](#)
Open the connection properties so that I can change the settings.

7. From the **Security Tab**, click **Settings**



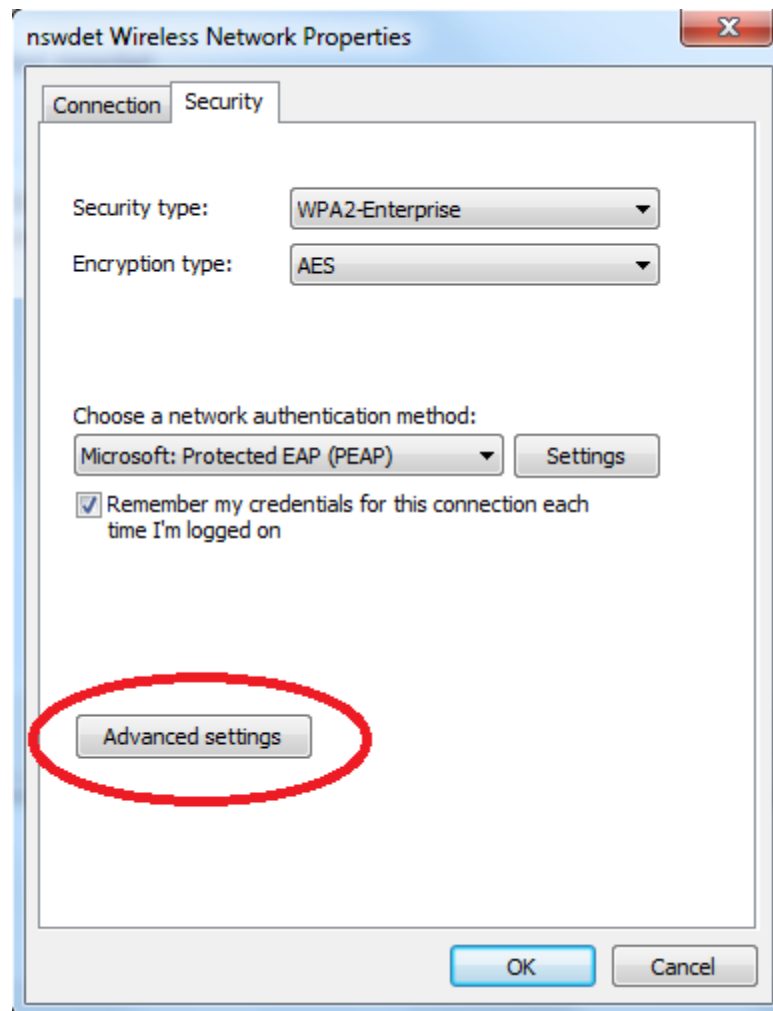
8. Untick **“Validate server certificate”** and click **Configure**



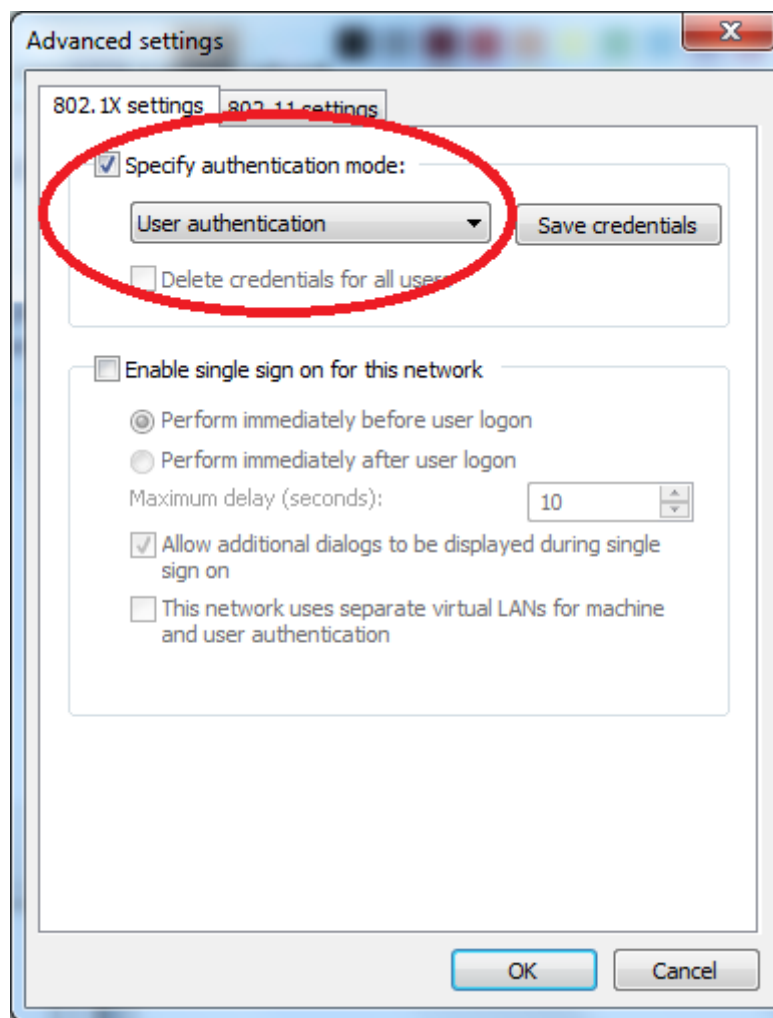
9. Untick the box and click OK on both this window and the previous window.



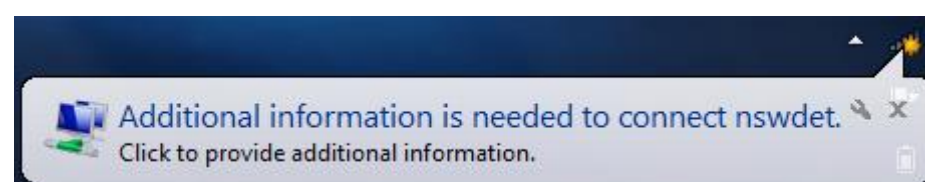
10. Click on Advance Settings



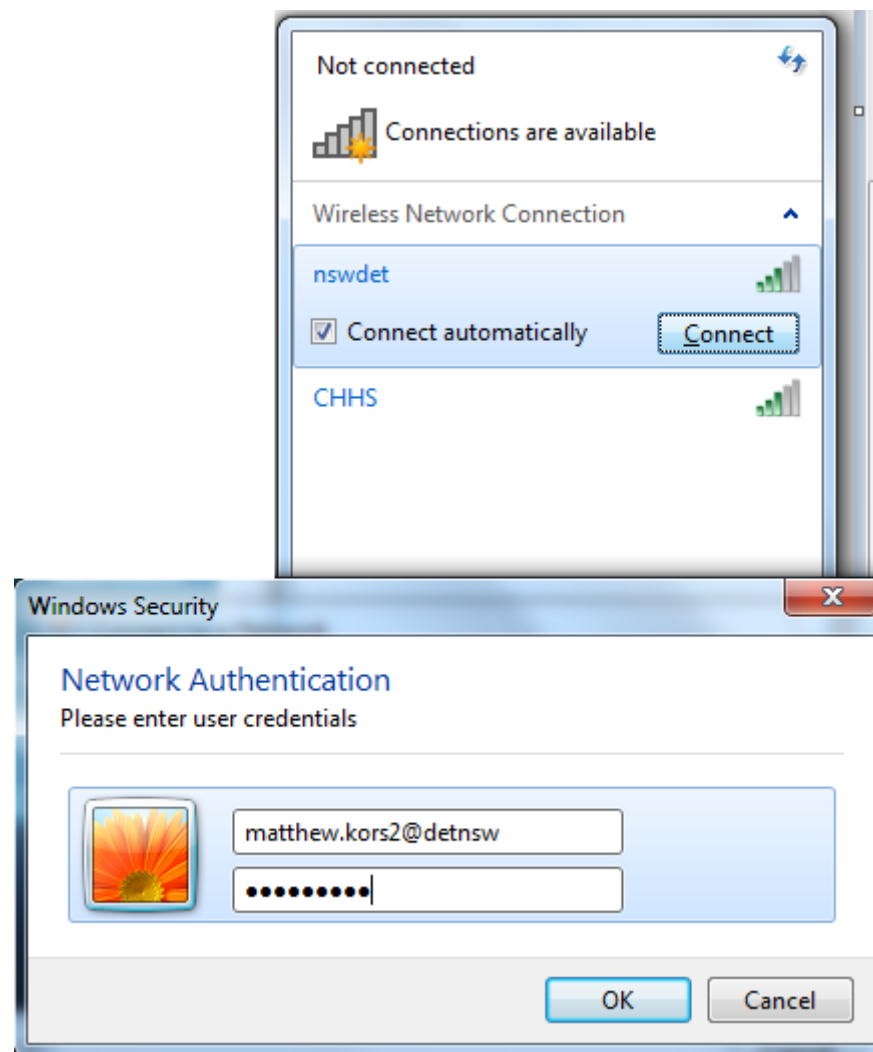
11. Tick **“Specify authentication mode”** and set to **“User authentication”**. Click OK when done.



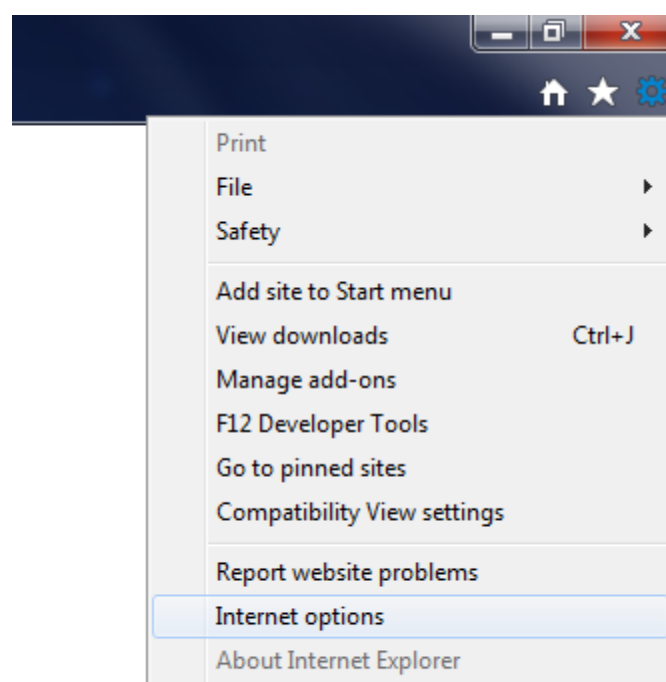
12. You should see a prompt asking for details.



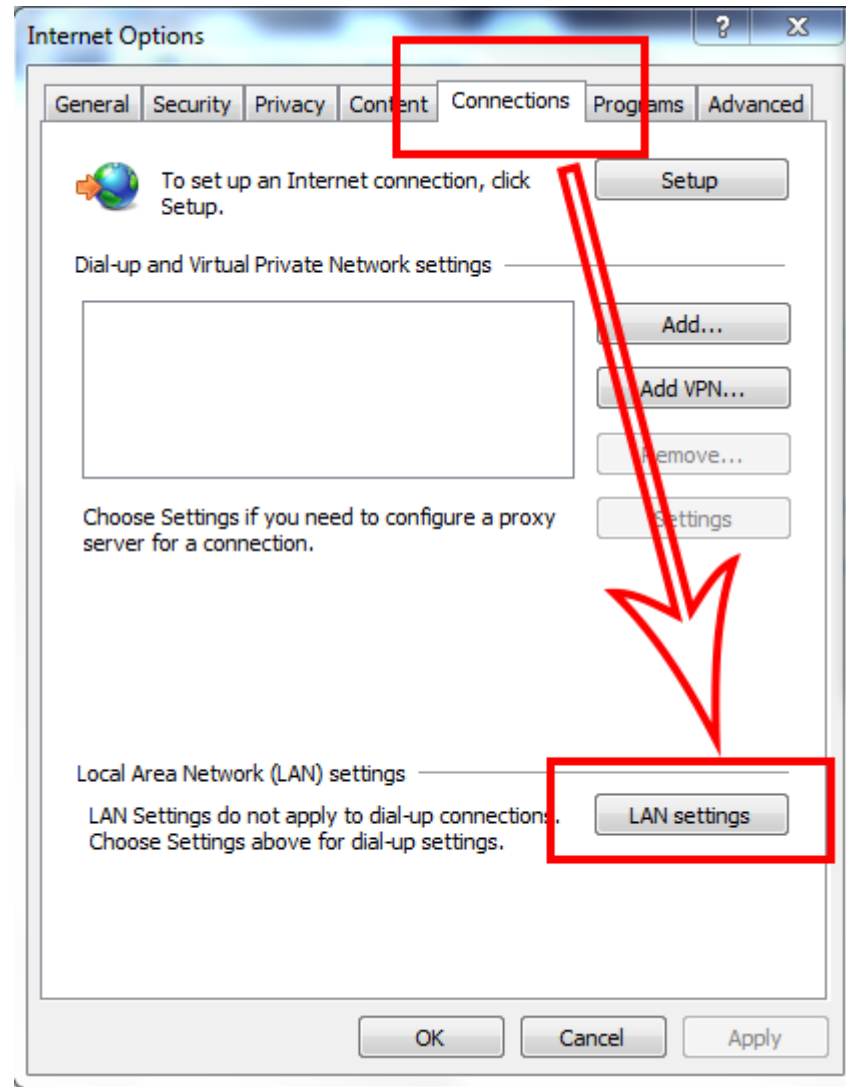
13. When prompted, enter your DEC PORTAL (internet) account, with **@DETNSW** at the end of the user name



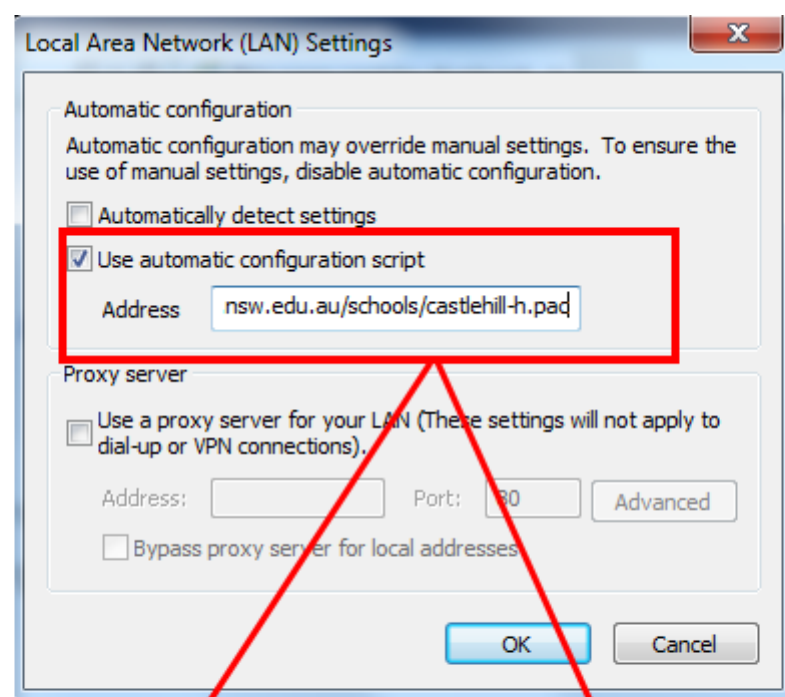
14. Open **Internet Explorer**  and **Internet options**



15. Go to the **Connections** tab and click on **LAN settings** at the bottom.



16. Tick "**User automatic configuration script**" and enter the address as seen below.



<http://pac.schools.nsw.edu.au/schools/castlehill-h.pac>

17. Click OK on all windows to close them and you will now have internet access.